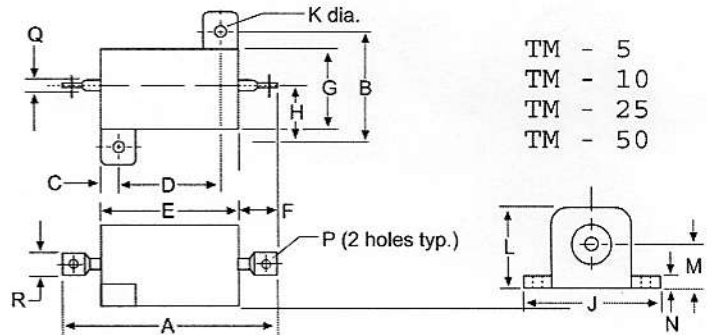
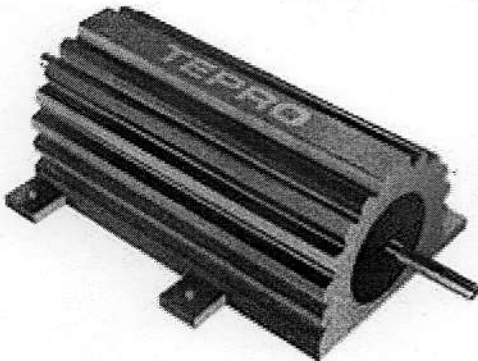


TYPE "TM"

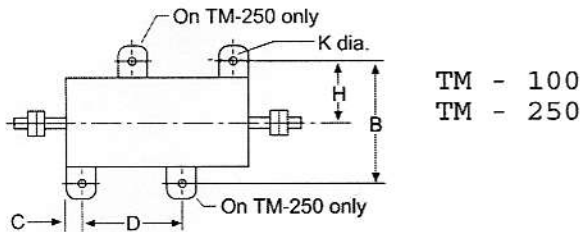


TEPRO TYPE	DIMENSIONS Inches (mm)																
	A ±.062	B ±.010	C ±.031	D ±.010	E ±.062	F ±.062	G ±.062	H ±.031	J ±.031	K ±.005	L ±.031	M ±.062	N ±.031	P ±.005	Q .AWG.	R MIN.	S ±.010
TM 5	1.12 (28.5)	.490 (12.4)	.078 (1.98)	.444 (11.2)	.600 (15.2)	.266 (6.76)	.334 (8.48)	.245 (6.22)	.646 (16.4)	.093 (2.36)	.320 (8.13)	.133 (3.38)	.065 (1.65)	.050 (1.27)	16	.085 (2.16)	
TM 10	1.37 (34.9)	.625 (15.8)	.094 (2.39)	.562 (14.2)	.750 (19.0)	.312 (7.92)	.438 (11.1)	.312 (7.92)	.812 (20.6)	.094 (2.39)	.406 (10.3)	.203 (5.16)	.094 (2.39)	.085 (2.16)	12	.140 (3.56)	
<u>TM 25</u>	1.94 (49.2)	.781 (19.8)	.172 (4.37)	.719 (18.2)	1.062 (26.9)	.438 (11.1)	.531 (13.4)	.391 (9.93)	1.094 (27.7)	.125 (3.18)	.562 (14.2)	.281 (7.14)	.094 (2.39)	.085 (2.16)	12	.140 (3.56)	
TM 50	2.78 (70.6)	.844 (21.4)	.188 (4.78)	1.562 (39.6)	1.938 (49.2)	.438 (11.1)	.594 (15.0)	.422 (10.7)	1.156 (29.3)	.125 (3.18)	.625 (15.8)	.312 (7.92)	.094 (2.39)	.085 (2.16)	12	.140 (3.56)	
TM 100	5.48 (139.1)	2.25 (57.1)	.375 (9.53)		3.50 (88.9)	.989 (25.1)	1.812 (46.0)	1.125 (28.5)	2.812 (71.4)	.188 (4.78)	1.75 (44.4)	.770 (19.5)	.188 (4.78)	12-24 UNC-2A			2.75 (69.8)
TM 250	7.00 (177.8)	2.50 (63.5)	.312 (7.93)	3.00 (76.2)	4.50 (114.3)	1.25 (31.7)	2.125 (53.9)	1.250 (31.7)	3.00 (76.2)	.188 (4.78)	2.188 (55.5)	1.00 (25.5)	.250 (6.35)	1/4-20 UNC-2A		.875 (22.2)	3.875 (98.4)

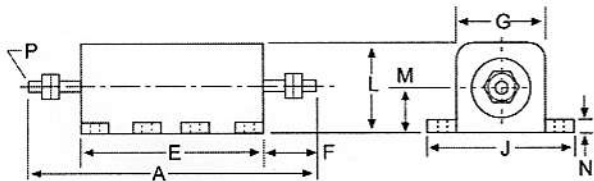
Note: Metric dimensions in (mm) for information only. 1" = 25.4 mm



- TM - 5
- TM - 10
- TM - 25
- TM - 50



- TM - 100
- TM - 250



811-28
TM 25