

INSTALLATION MANUAL

MODEL 850B



LED DIGITAL CLOCK



List of Revisions

Rev.	Description of Changes	Approved By	Approved Date
0	RELEASED	BFT	10/27/21

Table of Contents

List of Revisions.....	2
Important information.....	3
1. Features	4
2. Overall Dimensions	5
3. Electrical.....	6

Important information

Warranty Policy: Davtron's warranty policy is one year from date of installation on all parts, excluding batteries.

Technical Support: If you should need technical support, first check out the "Frequently Asked Questions" tab related to your unit. If you are unable to fix the problem, Davtron has on-site technicians who can help you step-by-step over the phone. You can call our main line at (866) 369-5588 and ask for technical support or email info@davtron.com

Repair Info: Davtron offers 5 day turn-around service on most repairs. We charge a flat labor rate see support page on-line, plus parts and shipping. If repairs are returned to factory via Federal Express®, we can sometimes get them out the same day. Davtron doesn't require a RMA #.

Recommend to see our repair form (see support page on-line) and use as template and provide details to the problem occurring with unit as well as your return address and contact information and ship to the following:

DAVTRON INC.
ATTN: REPAIRS DEPT
427 HILLCREST WAY
REDWOOD CITY (Emerald Hills), CA 94062
(650) 369-1188

All Davtron products are designed and manufactured in Redwood City, CA.

Installation of the M850B system is supplemental only; it is not intended as a replacement for or modification to an existing, approved, or required system. This model is limited to installation in non-pressurized, Part 23, Class I and II aircraft and is FAA approved under NORSEE policy PS-AIR-21.8-1602. The M850B system is not a required system and may not be used as a substitution for the certificated aircraft system. No operational credit may be taken for installation of M850B system.

The M850B uses a small coin cell battery (CR2032) and may require replacement. We suggest to return the unit for service if the unit does not maintain correct time when the aircraft is not operating.

Testing the display of the M850B, In GMT mode, Hold the SEL button down for three seconds and the display will indicate 88:88 and activate all five annunciators. See details how to set and operate in the M850B brochure.

Not for use as a primary M850B (instrument, visual display, etc.) for flight

1. Features

The M850B 2 ¼" clock Front Mount or Internal Mount option provides supplemental flight information.

- GMT - (Greenwich Mean Time: 24 hour format.)
- LT - (12 hour or 24 hour format.)
- FT - Flight Time recorded in hours and minutes or in hours, tenths, and hundreds.
- FT - Flight time alarm with external output.
- ET - Elapsed time with countdown timer with alarm.
- CDT - Count Down Time with alarm

SPECIFICATIONS

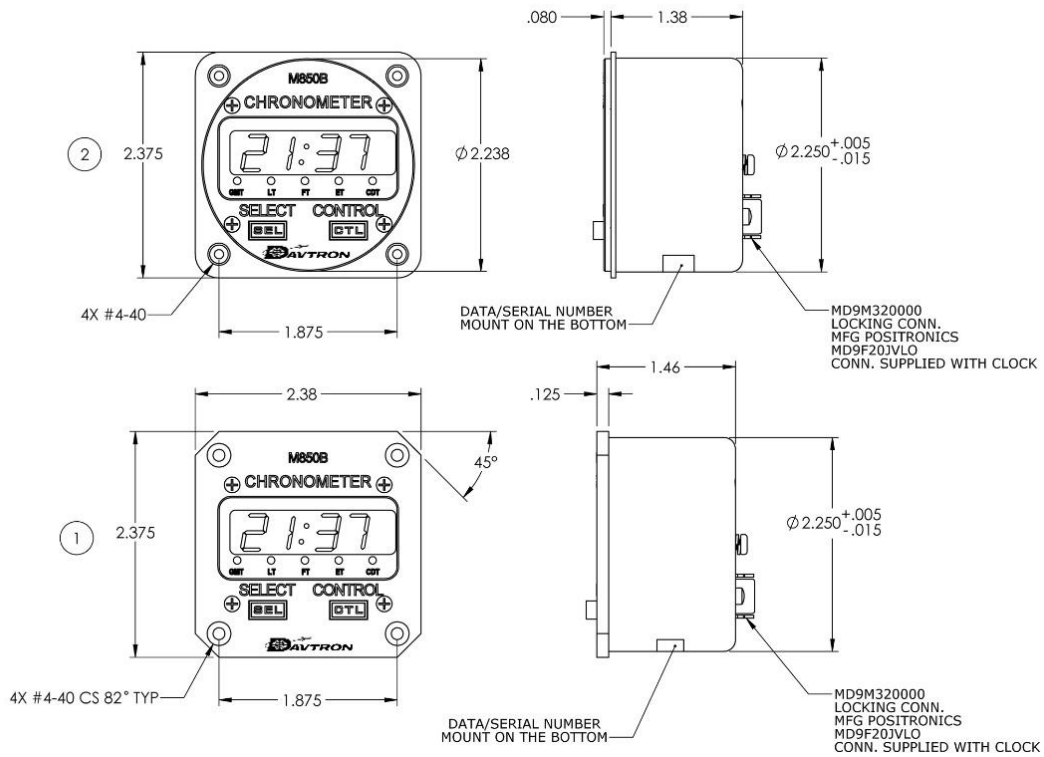
<ul style="list-style-type: none"> • Input Voltage: 14 to 28 Volts (Backlight 5V, 14V, or 28V) 	<ul style="list-style-type: none"> • Input Current: .2 Amps.
<ul style="list-style-type: none"> • Battery Type: CR2032. 	<ul style="list-style-type: none"> • Keep Alive Current: .00004 Amps.
<ul style="list-style-type: none"> • Illuminated buttons and annunciators for night viewing 	<ul style="list-style-type: none"> • Bright sunlight readable LED displays with automatic display brightness.
<ul style="list-style-type: none"> • Two button control system is natural and error free. Setting operations are identical for both alarm and time setting. 	<ul style="list-style-type: none"> • Crystal precision time reference, ±2 minutes per year accuracy from 40°C to +85°C.
<ul style="list-style-type: none"> • Weight: 5 ounces MAX. 	<ul style="list-style-type: none"> • Warranty: 1 year.

2. Overall Dimensions

The M850B can be mounted internal or front mount using a standard 2 ¼" panel cutout.

Installation of the following steps:

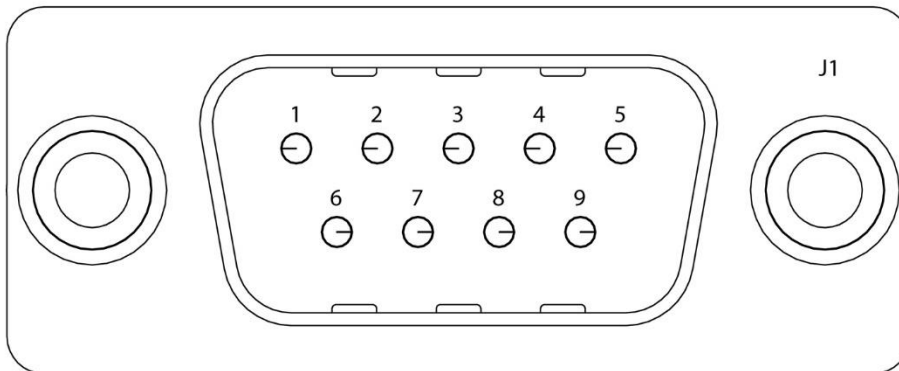
- Remove / relocate any old instrument
- Locate an appropriate power source / breaker
- Wire power as needed
- Mount the unit to the instrument panel with supplied screws
- Apply power and perform setup (see brochure)



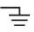

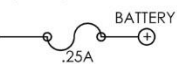
- NOTES:
1. MOUNTING DIMENSIONS STANDARD AIRCRAFT 2ATI TYPE.
 2. UNIT WEIGHT 4.4 OUNCES OR 135 GRAMS MAX.

②	1	M850B-2	STANDARD BLACK INTERNAL MOUNT DIGITAL CLOCK
①	1	M850B	STANDARD BLACK FRONT MOUNT DIGITAL CLOCK
ITEM#	QTY.	DAVTRON PART NO.	DESCRIPTION
--LIST OF MATERIALS--			

3. Electrical



CONNECTOR
PIN #

- 1 POWER GROUND 
- 2 14V TO 30V DC (FUSE OR BREAKER AT 1AMP)
- 3 4V TO 28V STARTS FLIGHT TIME
- 4 GROUND TO START FLIGHT TIME
- 5 ALARM OUT  AUDIO ALARM
- 6 SERIAL DATA CLOCK (OPTION)
- 7 SERIAL DATA CLOCK (OPTION)
- 8 INTERNAL LIGHTNING (5V, 14, 28V)
- 9 12V TO 28V KEEP ALIVE  BATTERY